

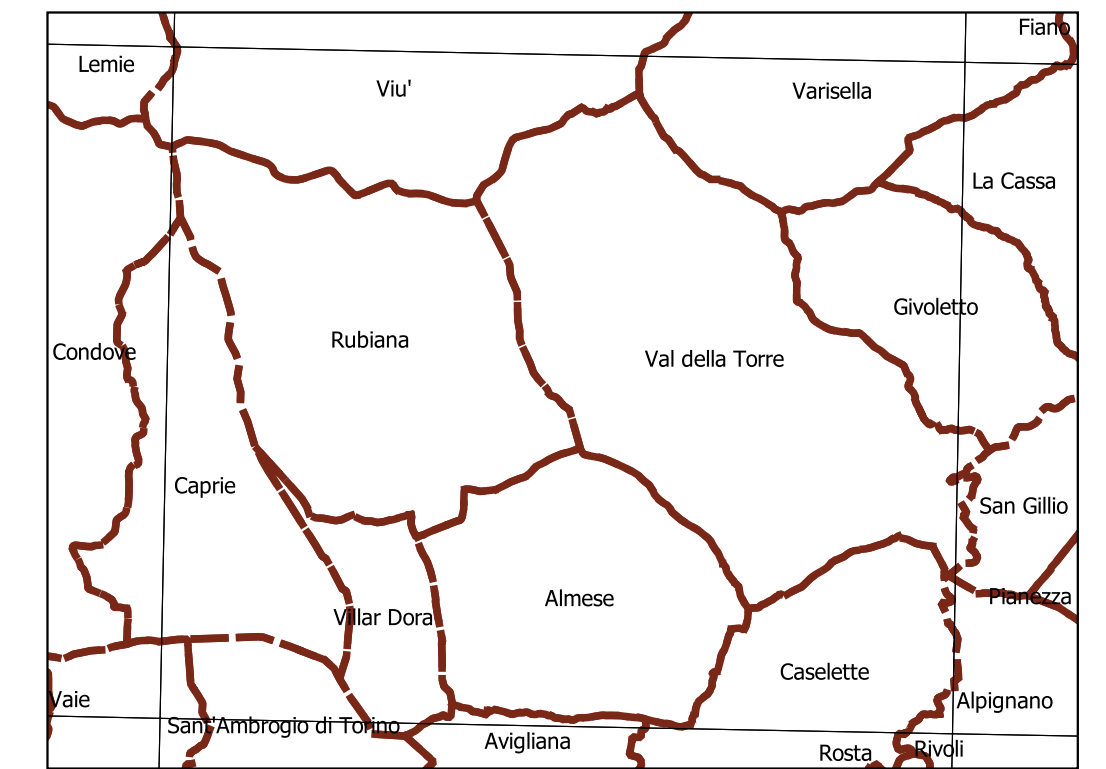
Direttiva 2007/60 CE – D.Lgs 49/2010
Informazione e consultazione al pubblico

DISTRIBUZIONE DELLA POPOLAZIONE SECONDO
GLI SCENARI DI PERICOLOSITA' DA ALLUVIONE
Aggiornamento 2020

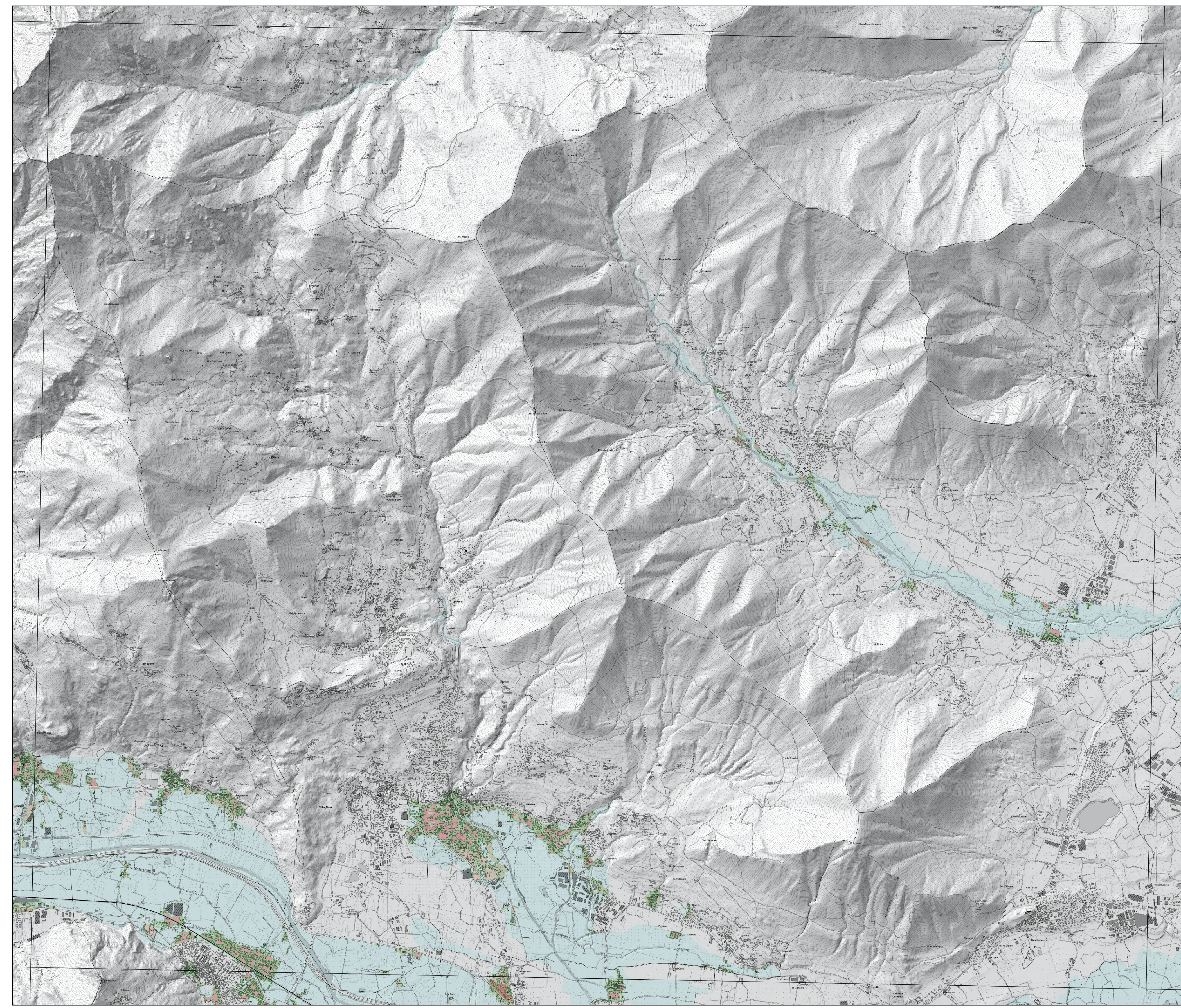
Scala 1:25.000










Localizzazione dell'area di studio nell'ambito regionale



Inquadramento secondo la Carta Tecnica Regionale: **Tavola 155 NW**



1 0 1 2 km

-  Limite di area abitata
- Stima del numero di abitanti interessati
-  0
-  < 10
-  10 - 100
-  100 - 250
-  250 - 500
-  > 500

Note:
 - Dati relativi al 15° Censimento della popolazione e delle abitazioni (ISTAT - 2011)
 - BDTRE 2019 - Base cartografica di riferimento b/n - Geo-servizio WMS.
 - OMBREGGIATURA - Arpa Piemonte - Geo-servizio WMS.